

About this manual

This manual describes:

- **Download and installation of the PC - software, which is required for updating the SOMlink software.**
⇒ Must be performed only one time and can be skipped for future updates.
- **Deleting an old version of the PC - software .**
⇒ Only necessary, if there is installed a previous version.
- **Performing the SOMlink - software update.**

Technical conditions



- **SOMlink from Firmware version v03.05.18**
- **Internet connection**
- **Computer with a wireless LAN connection**
- **Microsoft Windows 7 or newer version**
- **Administrator rights**

Download

1. Load som4.me/slu in the browser or visit our homepage on www.sommer.eu and find the SOMlink Updater there

Downloads

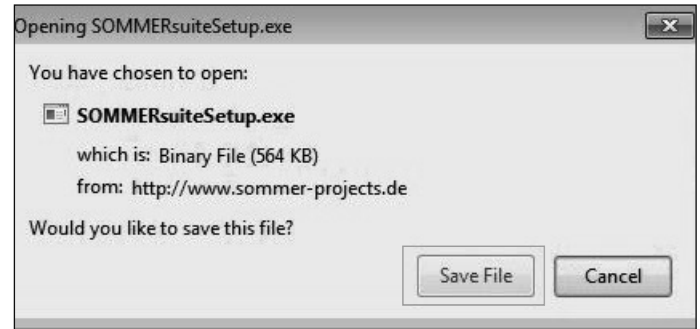
Bezeichnung	Dokument	Sprache	Dateityp	Größe	Letzte Änderung
SOMlink Installation		Deutsch (de)	PDF	1,74 MB	20.03.2017

SOMlink Updater

With this Software you can update your SOMlink quick and easy.

[Download SOMlink Updater Windows 7 / Windows 8 - 32Bit / 64Bit](#)

2. Download SOMlink Updater Software.



3. Click „Save file“ to start the download.

Installation

1. Start the installation process by double clicking the file „SOMMERSuiteSetup.exe“



2. Click „Run“ to confirm the security warning.

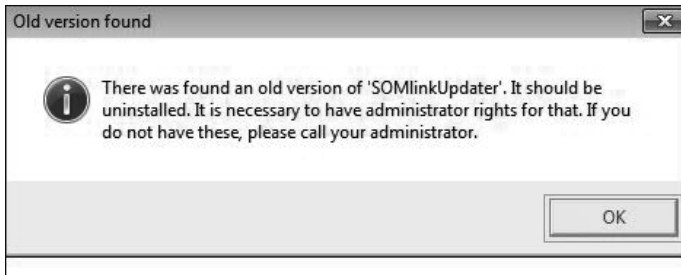


3. Click „Install“ to start the process.

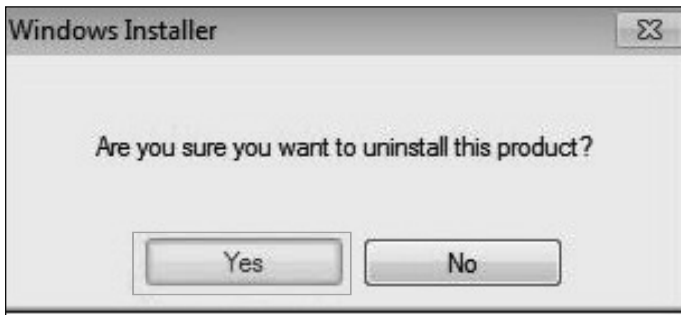
Uninstall previous version

➔ **Information**

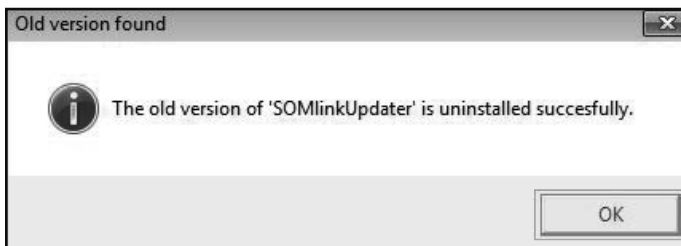
If a previous version of the SOMlink up-dater is installed, following note will appear and the subsequent steps must be performed. If you are performing the first installation of the SOMlink Updater, these steps are omitted.



1. Make sure you have administrator rights on this computer and go on by clicking „OK“

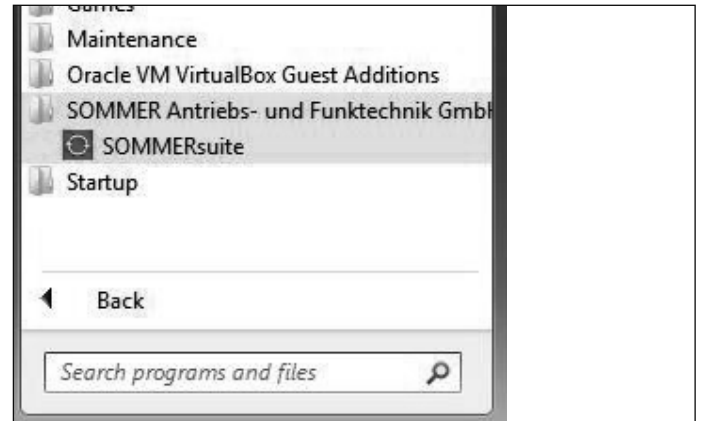


2. Confirm uninstallation of the old version with „Yes“.



3. Confirm with „OK“

Perform update



1. Start SOMMERsuite.



2. Click on „Start Update“



⇒ Download starts when Internet access is available.

➔ **Information**

If there are any problems, interrupt the LAN connection of you PC, with the result that an internet connection via WLAN gets started.



Information

Now a contact to SOMlink has to be made. If there are more than one SOMlinks within reach, an extra selection window appears. On each SOMlinks' back there is an indicated label. On this label you can find the Mac address to identify the toll and also the network key to authenticate it.

SOMMER
www.sommer.eu

Name

Teilenummer

MAC Address: 00-21-e2-00-09-36

http://somlink.lokal

Herstelldatum Funkfrequenz

IP 20

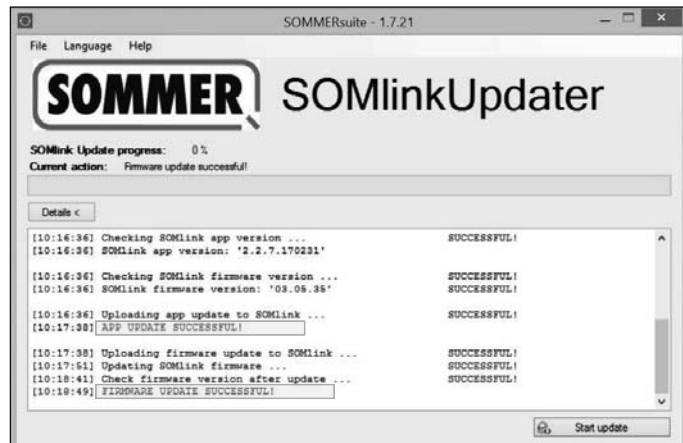
CE

Enter security key

SSID: SOMlink-00-21-e2-00-09-36

OK Abort

3. Enter network key (unless it's not already saved) and confirm with „OK“.
- ⇒ Update is being applied.



Information

The update was successful if this information are shown.

According to the scope of the update, there will be installed an App - Update and a Firmware-Update or just an App-Update.

4. Close the SOMlink Updater once the update operation is completed.
 5. Unplug the SOMlink from the socket, and then plug it in again after around five seconds.
 6. Delete the browser's temporary files (cache, cookies, etc.) before using the SOMlink.
- ⇒ This ensures that the latest SOMlink data is displayed.